

SLB-0121

Side of Pole/Wall Mount Bracket (For use with Solarland[®] SLP003-SLP020 Panels)

The Solarland[®] SLB-0121 "L" style mounting bracket is designed to be used with the Solarland[®] SLP Series panels ranging in size from 3W – 20W. It is favored in the gate industry, for easy of installation in gate openers, and can be securely mounted to any wall surface.

Specifications

Mounting Type	Side of Pole/Wall Mount
Module Type	Specifically designed to work with Solarland SLP series panels, but can be adapted for use with other panels
Number of Modules	Mounts 1 Panel
Setting Angle	45-degree Fixed Angle mounting
Wind Load	Designed to withstand wind speeds of 90mph
Snow Loading	1.1kN/m ²
Warranty	5 Years



Components and Parts

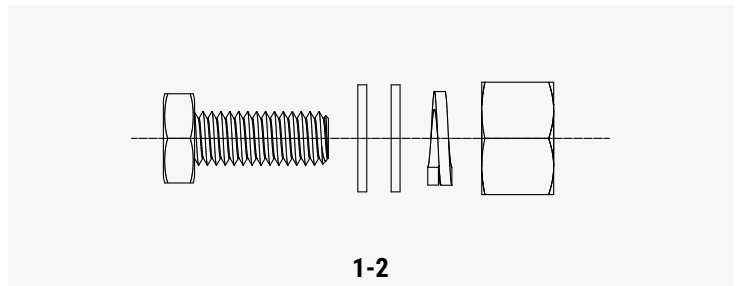
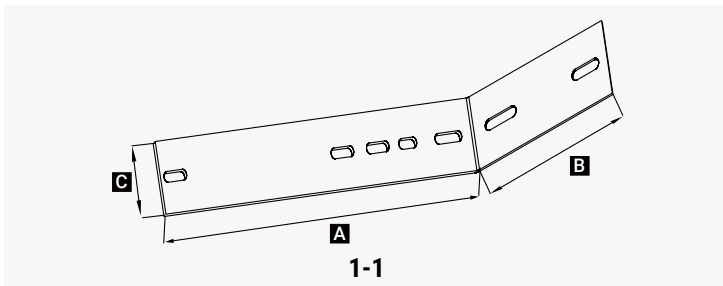


Diagram	Component	Material	Surface Treatment	Quantity	Dimensions
1-1	Fixed Bracket	5052Al	N/A	1	A=385mm[15.16in.], B=123mm[4.84in.], C=77mm[3.03in.]
1-2	Module Bolt	AISI304	N/A	2	M6X16mm[0.63in.]

*Note: Designed to use with SLUB-0007 U bolts (1-3/4" pole). U bolts sold separately.

Mounting Diagram

